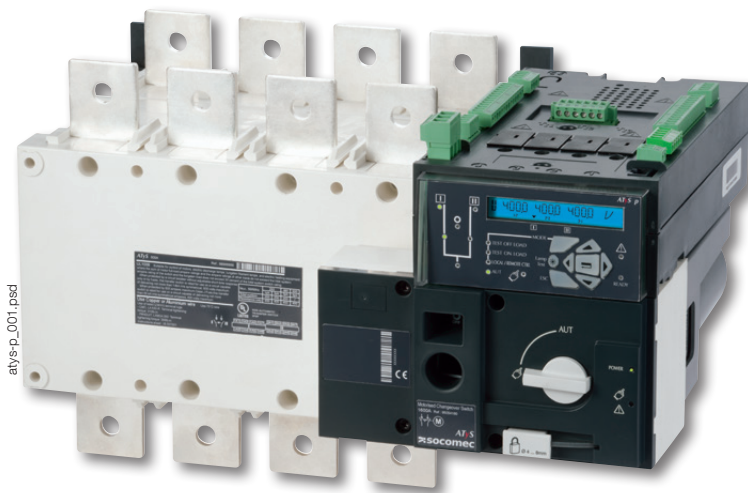


ATyS p

Automatic Transfer Switching Equipment
from 125 to 3200 A



The solution for

- > Applications requiring power management and communication.



Strong points

- > Optional communication modules
- > Recording of events
- > Configuration software
- > Power measurements
- > Possibility to set periodic genset startup

Conformity to standards

- > IEC 60947-6-1
- > IEC 60947-3
- > GB/T 14048.11



Approvals and certifications⁽¹⁾



BUREAU
VERITAS



⁽¹⁾ Product references on request.

Webserver

The Webserver function comprises HTML pages embedded in the Ethernet communication module.

These pages can be accessed via an internet browser, simply by entering the IP address.

The webserver offers the following functionalities:

- > Display of source status and switch position
- > Display of the main measurements
- > Extraction of the latest logged events
- > Display of the product configuration

Function

ATyS p are 3 or 4 pole automatic transfer switches with positive break indication. They incorporate all the functions offered by the ATyS t and g, as well as functions designed for **power management and functions communication**.

In automatic mode they enable the monitoring of, and the on-load changeover between, two power supply sources, in accordance with the parameters configured through LCD display, or via communication.

They are intended for use in low voltage power supply systems where a brief interruption of the load supply is acceptable during transfer.

Advantages

Recording of events

ATyS p switches enable effective monitoring of your installation thanks to timestamped event recording.

Events can be retrieved and read via communication.

Optional communication modules

The ATyS p offers communication functions through the addition of optional modules, such as RS485 Modbus or Ethernet with embedded Webserver.

Configuration software

Software (Easyconfig) is available enabling the ATyS p parameters to be easily configured and the existing configuration to be saved and sent to other units.

Power measurements

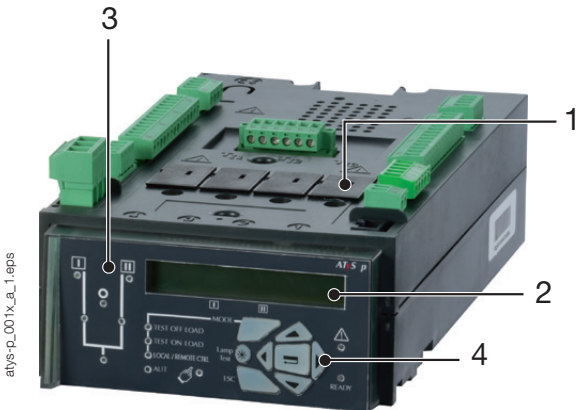
ATyS p products are particularly suited to energy management and monitoring.

In addition to their integrated power and energy measurement functions (with a 2% accuracy level), programmable inputs/outputs can be utilised to control load shedding based on a load level or tariff.

Possibility to set periodic genset startup

ATyS p switches offer additional functions for maintenance. They include a programmable genset starting function which allows the starting dates and operating times to be configured.

Front panel



1. Slots for optional plug-in modules.
2. Backlit LCD display.
3. Source availability and position indication LEDs.
4. Parameter programming keypad.

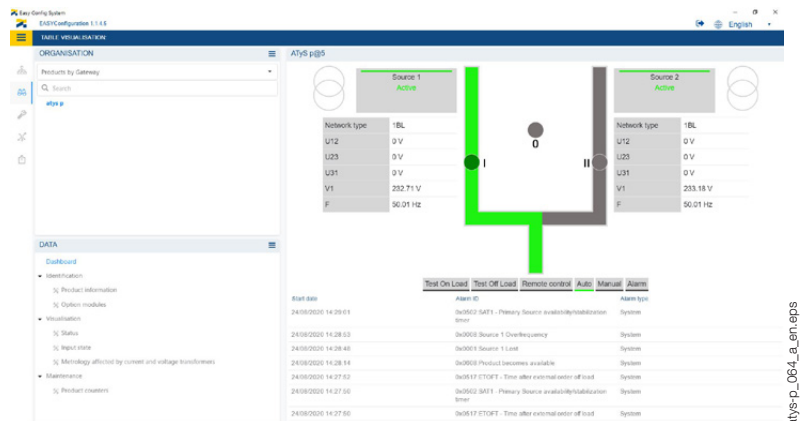
Communication and configuration

Easyconfig

Easyconfig software is the ideal solution to save time and simplify complex configuration.

Allows configuration of the following parameters:

- application type,
- voltage/frequency thresholds,
- timers,
- inputs/outputs...



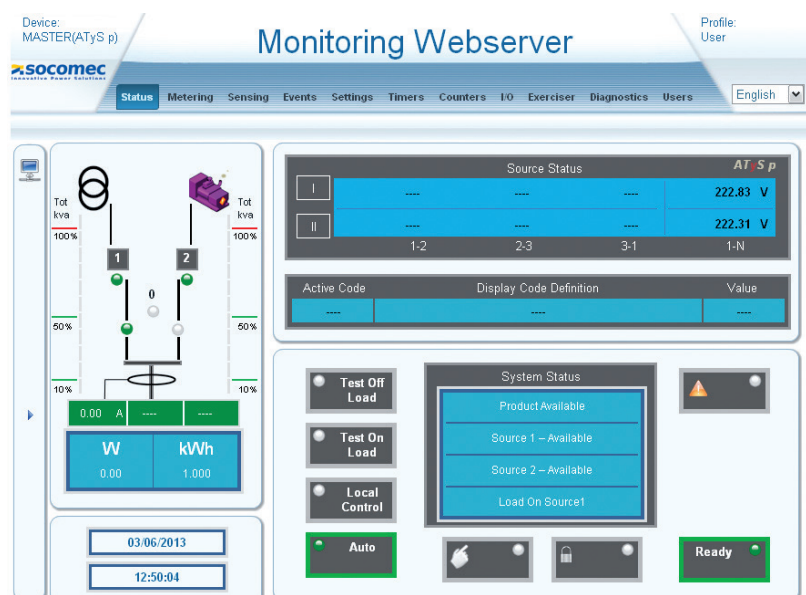
Webserver

Thanks to optional modules, ATyS p can communicate in **Modbus** and **Ethernet** protocols.

The Ethernet communication module includes the **Webserver** function for access to the ATyS p via an internet browser.

The Webserver function enables:

- display of source status and switch position,
- display of voltage measurements,
- display of parameters,
- access to the list of logged events.



References

ATyS p

Rating (A) / Frame size	No. of poles	ATyS p	Bridging bars ⁽³⁾	Voltage sensing and power supply kit	Terminal shrouds	Terminal screens	Optional modules	Auxiliary contact						
125 A / B3	3 P	9573 3012	4109 0019	3 P 1559 3012 4 P 1559 4012	3 P 2694 3014 ⁽²⁾ 4 P 2694 4014 ⁽²⁾	3 P 1509 3012 4 P 1509 4012								
	4 P	9573 4012												
160 A / B3	3 P	9573 3016												
	4 P	9573 4016												
200 A / B3	3 P	9573 3020												
	4 P	9573 4020												
250 A / B4	3 P	9573 3025							4109 0025	1559 3025	3 P 2694 3021 ⁽²⁾ 4 P 2694 4021 ⁽²⁾	3 P 1509 3025 4 P 1509 4025	RS485 MODBUS communication 4825 0092	1599 0502
	4 P	9573 4025								1559 4025				
315 A / B4	3 P	9573 3031	4109 0039	3 P 1559 3040 4 P 1559 4040										
	4 P	9573 4031												
400 A / B4	3 P	9573 3040												
	4 P	9573 4040												
500 A / B5	3 P	9573 3050	4109 0050	3 P 1559 3063 4 P 1559 4063	3 P 2694 3051 ⁽²⁾ 4 P 2694 4051 ⁽²⁾	3 P 1509 3063 4 P 1509 4063	2 inputs / 2 outputs 1599 2001							
	4 P	9573 4050												
630 A / B5	3 P	9573 3063	4109 0063	3 P 1559 3080 4 P 1559 4080	3 P 1509 3080 4 P 1509 4080	3 P 1509 3080 4 P 1509 4080	Ethernet communication 4825 0203							
	4 P	9573 4063												
800 A / B6	3 P	9573 3080	4109 0080	3 P 1559 3080 4 P 1559 4080	3 P 1509 3080 4 P 1509 4080	3 P 1509 3080 4 P 1509 4080	Ethernet communication + RS485 MODBUS gateway 4825 0204							
	4 P	9573 4080												
1000 A / B6	3 P	9573 3100												
	4 P	9573 4100												
1250 A / B6	3 P	9573 3120	4109 0120	3 P 1559 3120 4 P 1559 4120	3 P 1509 3160 4 P 1509 4160	3 P 1509 3160 4 P 1509 4160	Analogue outputs 4825 0093	1599 0532						
	4 P	9573 4120												
1600 A / B7	3 P	9573 3160	4109 0160	3 P 1559 3160 4 P 1559 4160	3 P 1509 3160 4 P 1509 4160	3 P 1509 3160 4 P 1509 4160	Pulse outputs 4825 0090							
	4 P	9573 4160												
2000 A / B8	3 P	9573 3200	(1)	3 P 1559 3200 4 P 1559 4200	3 P 1509 3200 4 P 1509 4200	3 P 1509 3200 4 P 1509 4200		included						
	4 P	9573 4200												
2500 A / B8	3 P	9573 3250												
	4 P	9573 4250												
3200 A / B8	3 P	9573 3320												
	4 P	9573 4320												

(1) See "Copper bar connection pieces".

(2) For complete shrouding at front, rear, top and bottom, order quantity 4; if equipped with bridging bars order quantity 3. For top and bottom shrouding for the front only, order quantity 2.

(3) For a 3 pole device order quantity 3 bridging bars, for a 4 pole device order quantity 4.

ATyS p

Rating (A) / Frame size	No. of poles	ATyS p	DC power supply	3 position padlocking	Key handle interlocking system	Door protective surround	Remote control interface
125 A / B3	3 P	9573 3012	12 VDC/230 VAC 1599 5012 24 VDC/230 VAC 1599 5112 48 VDC/230 VAC 1599 5212	9599 0003 ⁽¹⁾	Using lock RONIS EL11AP in position 0 9599 1006 ⁽¹⁾	1539 0012	D20 9599 2020 + RJ45 cable connection 1599 2009
	4 P	9573 4012					
160 A / B3	3 P	9573 3016					
	4 P	9573 4016					
200 A / B3	3 P	9573 3020					
	4 P	9573 4020					
250 A / B4	3 P	9573 3025					
	4 P	9573 4025					
315 A / B4	3 P	9573 3031					
	4 P	9573 4031					
400 A / B4	3 P	9573 3040					
	4 P	9573 4040					
500 A / B5	3 P	9573 3050					
	4 P	9573 4050					
630 A / B5	3 P	9573 3063					
	4 P	9573 4063					
800 A / B6	3 P	9573 3080					
	4 P	9573 4080					
1000 A / B6	3 P	9573 3100					
	4 P	9573 4100					
1250 A / B6	3 P	9573 3120					
	4 P	9573 4120					
1600 A / B7	3 P	9573 3160					
	4 P	9573 4160					
2000 A / B8	3 P	9573 3200					
	4 P	9573 4200					
2500 A / B8	3 P	9573 3250					
	4 P	9573 4250					
3200 A / B8	3 P	9573 3320					
	4 P	9573 4320					
				9599 0004 ⁽¹⁾	Using lock RONIS EL11AP in position 0 9599 1004 ⁽¹⁾	1539 0080	

(1) Factory mounting only.