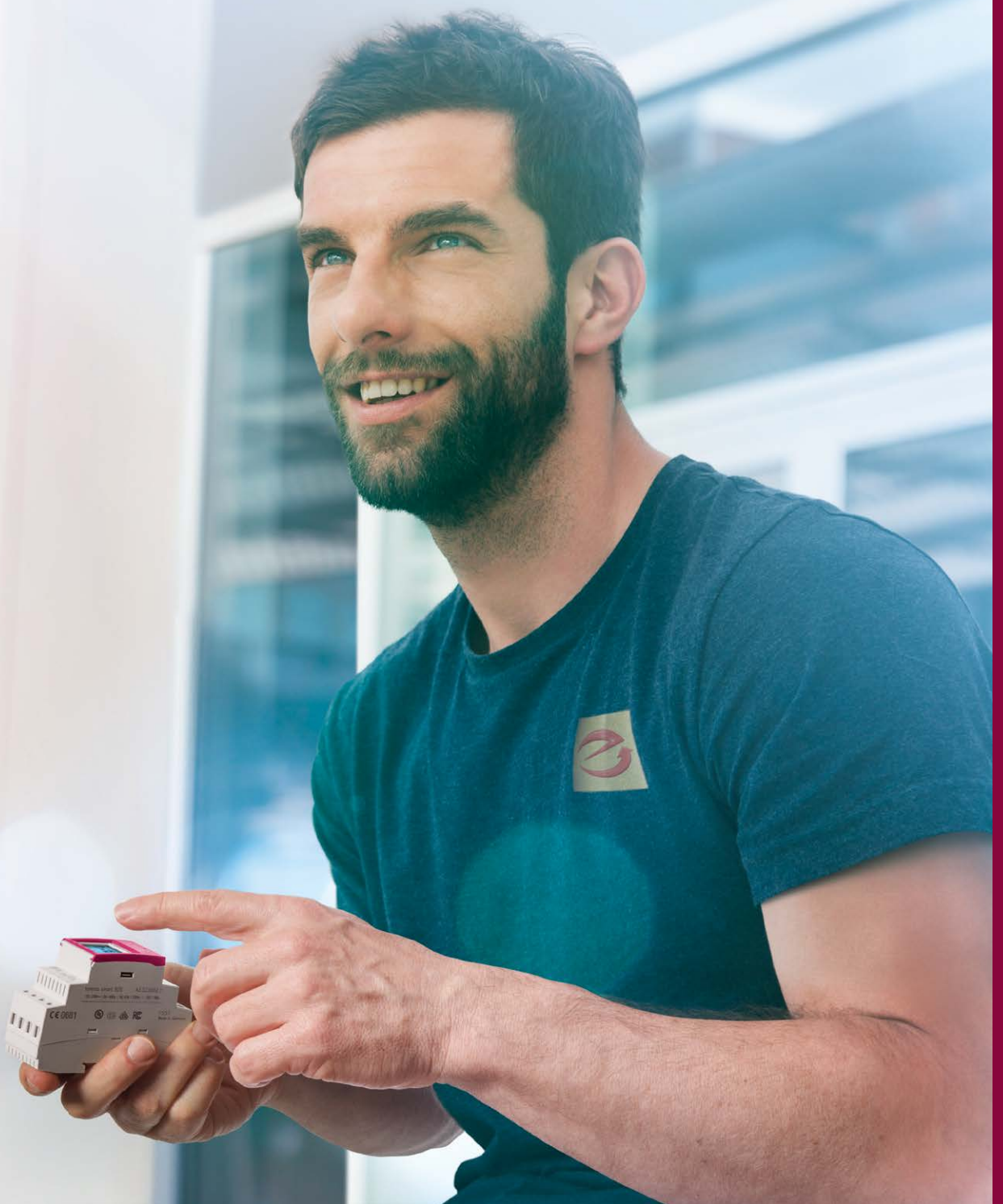


GRÄSSLIN
by **INTERMATIC**

GREAT PERFORMANCE.
EASY HANDLING.





Great performance. Easy handling.

Reliable technology combined with the greatest ease of use: These are the key drivers for the development and manufacturing of leading products in the areas of time switching, light and temperature control as well as energy and hour meters.

At Grässlin, we are focused on the professional needs of electricians. Our highest priority is the development of solutions which make their work easier and more efficient. This is why we do not indulge in oversized concepts and technical gimmicks, but rather offer technologically sophisticated products that are easy to install, reliable and able to realize modern functionalities in building automation to our customers - following our motto "Great performance. Easy handling."

To deliver on these promises in the future, we work today on the technological challenges of tomorrow and sustainably drive innovation and the quality of the Grässlin brand. Based on our achievements to date, we have set ambitious goals that ensure our position as a driving force in the industry and as the first choice for ambitious electricians in the future.

GRÄSSLIN – The brand for ambitious electricians.

Pioneering spirit, flexibility and customer focus have transformed a family-run business of four persons to a global brand for professional applications in building automation. Numerous product innovations and a global reputation as an expert for time switch technology establish Grässlin as the market leader.

About GRÄSSLIN

MEMBER OF THE INTERMATIC GROUP

Since 2007, Grässlin has been a member of the Intermatic Group, a leading manufacturer of energy control systems with its headquarters in Spring Grove, Illinois, USA. Intermatic employs approx. 750 staff at six international locations.

Owing to its globally unique competency in the field of time switches as well as light and temperature control, Grässlin makes a crucial contribution to Intermatic as a global specialist in the area of energy management solutions.

Both companies look back on a long tradition and continually invest in innovative and sustainable technologies for the purpose of improving their products and service for their customers.

DETAILS & FACTS

► Company history

- 1956** Company foundation by Dieter Grässlin
- 1964** Introduction of the first time switches
- 2007** Grässlin becomes part of the Intermatic Group
- 2016** Introduction of talented smart time switches

► Agents

97 (worldwide)

► Product portfolio

- Time switch technology
- Light control
- Temperature control
- Energy and hour meters

STATE OF THE ART.



MADE IN GERMANY.



Products for a better life.

At Grässlin, our aim is to make life in residential, office, commercial and industrial buildings safer and more comfortable while assisting in saving energy efficiently. We offer reliable, powerful and user-friendly time switches, products for light and temperature control as well as energy and hour meters.

Time switch technology
Temperature control
Light control
Meters

Outstanding products

Grässlin products stand for reliable quality, highest precision and total ease of use. The product range includes analogue and digital time switches delivered with versatile programs and extensive standard functionality as well as products combining regular time switch functions with sensors. These include, among others, motion sensors, presence sensors and twilight switches. The range is complemented by time switch modules, meters and products to control heating systems.

Impressive benefits

The combination of sophisticated technology and ease of use enables the simple controlling of complex applications and achieve the highest possible energy efficiency at the same time. Individual programming options and numerous valuable functions ensure that even the most ambitious individual needs can be met.

Time switch technology

Intelligent time switch technology by Grässlin makes life in residential, office, commercial and industrial buildings easier, safer and assists in saving energy efficiently. This is achieved by innovative products which impress with intuitive interfaces and can be installed with ease.



BENEFITS

Available as digital and analogue models, Grässlin DIN-rail, universal and plug-in time switches as well as various time switch modules reliably perform interior and exterior switching tasks, such as machinery control, lighting or specific solutions like sprinkler systems.

Temperature control

Our precise room thermostats and time switches for heating systems offer a variety of options for controlling the temperature in residential, office, commercial and industrial buildings. They assist in raising the comfort level by adjusting the feel-good temperature individually and energy efficiently - whatever the season.



BENEFITS

Whether wired or wireless: Grässlin temperature control products are easy to install or retrofit and can be configured to individual requirements. They impress with high functionality, intelligent features, ease of use and reliability.

Light control

The reliable Grässlin light controls offer the highest degree of functionality, switch the desired situation in residential, office, commercial or industrial buildings, or in the entire outdoor area individually and provide a noticeable increase in security, living comfort and energy efficiency.



BENEFITS

Whether for indoor use such as LED-lamps, ballast units, window displays or exterior use such as staircases or street lamps:

With the robust motion and presence sensors, sensor-operated twilight switches and the individually configurable staircase lighting time switches, you are perfectly equipped for any task at hand.

Meters

The sealable energy and hour meters from Grässlin count, measure and monitor energy consumption in private households, industry, trades or building services. They promote energy efficiency, conserve resources and thereby save electricity and money.



BENEFITS

Grässlin energy meters are available in analogue and digital designs as well as with a MID certificate for commercial use. Hour meters can be individually configured for each application area by adding accessories. All of them are maintenance-free, robust and reliable; they help to determine operating costs or to document maintenance intervals.





THE BEST POSSIBLE SERVICE

GLOBAL PRESENCE

Grässlin distributes its products in the OEM segment as well as via global retail distribution partners. Our authorized partners are continuously trained by us and are the crucial link between us and our customers, offering them the perfect combination of first-class products and competent advice - anywhere in the world.



COMPETENT LOCAL SUPPORT

Grässlin stands for technologically sophisticated products that impress with outstanding ease of use. In order to deliver on this promise in all locations worldwide, it is important for us to offer the best possible support to our distribution partners, so they can market our products in the best possible way:

- ▶ Internet-Portal for customers and partners with hands-on service modules
- ▶ Free image database with up-to-date product images
- ▶ Download-centre with all publications, product information and manuals
- ▶ Free e-learning portal on the Grässlin website



Grässlin GmbH
Bundesstraße 36
78112 St. Georgen
Germany

☎ +49 (0) 7724 / 933-0
📠 +49 (0) 7724 / 933-240

🌐 www.graesslin.de
✉ info@graesslin.de