

# Rittal – The System.

Faster – better – everywhere.

## **Base/plinth trim panels, side, 100 mm, stainless steel for base/plinth system VX – VX 8620.071**

Date : Nov 29, 2019

ENCLOSURES

POWER DISTRIBUTION

CLIMATE CONTROL

IT INFRASTRUCTURE

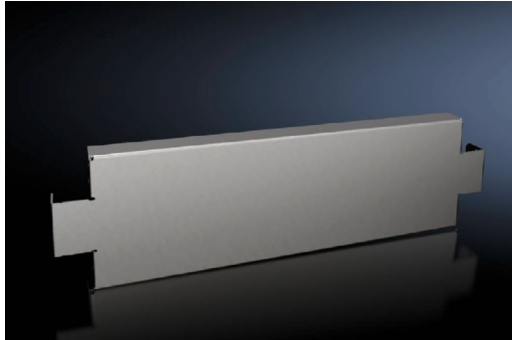
SOFTWARE & SERVICES

FRIEDHELM LOH GROUP



# Base/plinth trim panels, side, 100 mm, stainless steel for base/plinth system VX – VX 8620.071

created: 29.11.2019 on [www.rittal.com/com-en](http://www.rittal.com/com-en)



## Product description

<b>Description:</b>	To finish off a base/plinth unit at the sides and for additional stabilisation or for the interior configuration of bayed base/plinths. One 200 mm high or two 100 mm high trim panels may optionally be fitted on 200 mm high base/plinths.
---------------------	--

<b>Material:</b>	Stainless steel 1.4301 (AISI 304)
------------------	-----------------------------------

<b>Surface finish:</b>	Brushed, grain 400
------------------------	--------------------

<b>Supply includes:</b>	Assembly parts
-------------------------	----------------

## Product features

<b>To fit:</b>	Depth: = 500 mm
----------------	-----------------

<b>Dimensions:</b>	Height: 100 mm
--------------------	----------------

<b>Packs of:</b>	2 pc(s).
------------------	----------

<b>Weight/pack:</b>	2.2 kg
---------------------	--------

<b>Copper weight (kg per piece):</b>	0
--------------------------------------	---

<b>EAN:</b>	4028177922389
-------------	---------------

<b>Customs tariff number:</b>	94039010
-------------------------------	----------

<b>ETIM 7.0:</b>	EC000721
<b>ETIM 6.0:</b>	EC000721
<b>eCl@ss 8.0/8.1:</b>	27182003
<b>eCl@ss 6.0/6.1:</b>	27189270
<b>Product description:</b>	VX Base/plinth trim panel, side, H: 100 mm, for D: 500 mm, stainless steel, 1.4301
<b>Approvals</b>	
<b>Approvals:</b>	UL + C-UL
<b>Certificates:</b>	EAC