

Rittal – The System.

Faster – better – everywhere.

Module plates For 16/24-pole connectors – TS 8609.140

Date : Dec 24, 2019

ENCLOSURES

POWER DISTRIBUTION

CLIMATE CONTROL

IT INFRASTRUCTURE

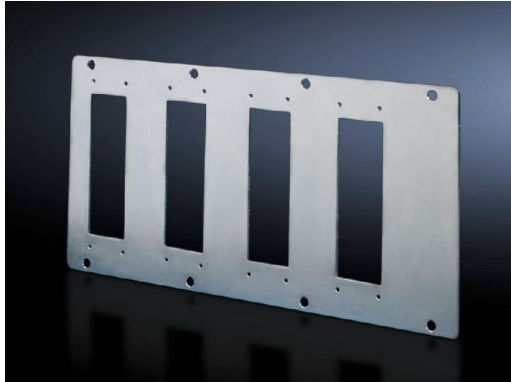
SOFTWARE & SERVICES

FRIEDHELM LOH GROUP



Module plates For 16/24-pole connectors – TS 8609.140

created: 24.12.2019 on www.rittal.com/com-en



Product description

| | |
|-------------------------|---|
| Design: | for 24-pole connectors |
| Description: | With cut-outs to accommodate connectors. In addition to mounting on divider panels, module plates may also be attached to the 25 mm pitch pattern of the enclosure and to the rails of the TS/PS system |
| Material: | Sheet steel, 2 mm |
| Surface finish: | Zinc-plated |
| Supply includes: | Seal and assembly parts |

Product features

| | |
|--------------------------------------|--|
| Cable entry: | Number of cut-outs: 4 Number x metric diameter: 4 |
| Packs of: | 1 pc(s). |
| Weight/pack: | 0.76 kg |
| Copper weight (kg per piece): | 0 |
| EAN: | 4028177211766 |
| Customs tariff number: | 73269098 |
| ETIM 7.0: | EC000211 |

| | |
|-----------------------------|---|
| ETIM 6.0: | EC000211 |
| eCl@ss 8.0/8.1: | 27142421 |
| eCl@ss 6.0/6.1: | 27182102 |
| Product description: | TS Module panel, for 24-pole connectors |
| Approvals | |
| Certificates: | EAC |