

# Rittal – The System.

Faster – better – everywhere.

## ► Connector gland for connector cut-outs (24-pole) – SZ 2400.000

Date : Dec 29, 2019

ENCLOSURES

POWER DISTRIBUTION

CLIMATE CONTROL

IT INFRASTRUCTURE

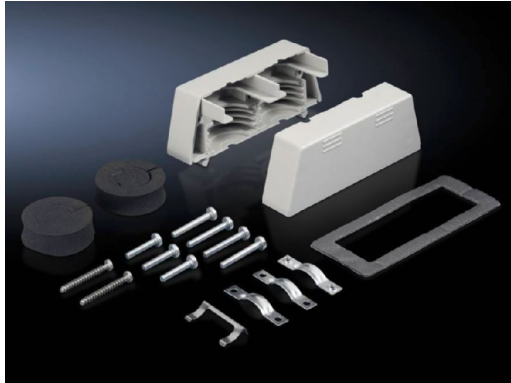
SOFTWARE & SERVICES

FRIEDHELM LOH GROUP



# Connector gland for connector cut-outs (24-pole) – SZ 2400.000

created: 29.12.2019 on [www.rittal.com/com-en](http://www.rittal.com/com-en)



## Product description

<b>Description:</b>	To fit drilled holes Ø 60 mm. For the entry of cables with pre-assembled connectors, the rotating flap and cover are easily removed.
<b>Material:</b>	Enclosure: Plastic Clamps: Sheet steel
<b>Surface finish:</b>	Clamps: Zinc-plated
<b>Supply includes:</b>	Assembly parts

## Product features

<b>Dimensions:</b>	Width: 142 mm Height: 50 mm Depth: 54 mm
<b>Packs of:</b>	1 pc(s).
<b>Weight/pack:</b>	0.28 kg
<b>Copper weight (kg per piece):</b>	0
<b>EAN:</b>	4028177022263
<b>Customs tariff number:</b>	39269097
<b>ETIM 7.0:</b>	EC000211

<b>ETIM 6.0:</b>	EC000211
<b>eCl@ss 8.0/8.1:</b>	27142421
<b>eCl@ss 6.0/6.1:</b>	27400604
<b>Product description:</b>	SZ Connector gland, for connector pads (24-pole), for cables ø 8-36 mm
<b>Approvals</b>	
<b>Certificates:</b>	EAC