

# SIRCO M & MV

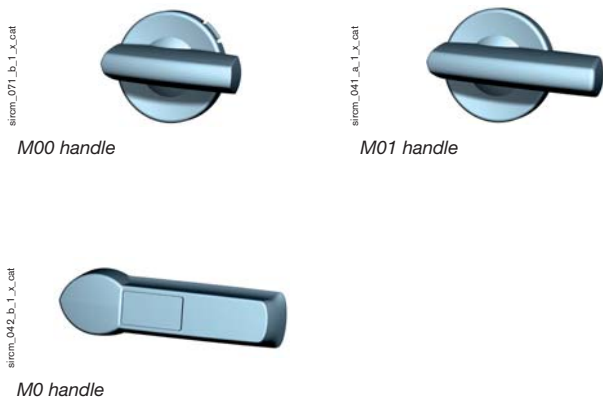
## 16 to 160 A



- Functions
- References
- Accessories**
- Characteristics
- Dimensions

### Accessories

#### Direct handle



#### References

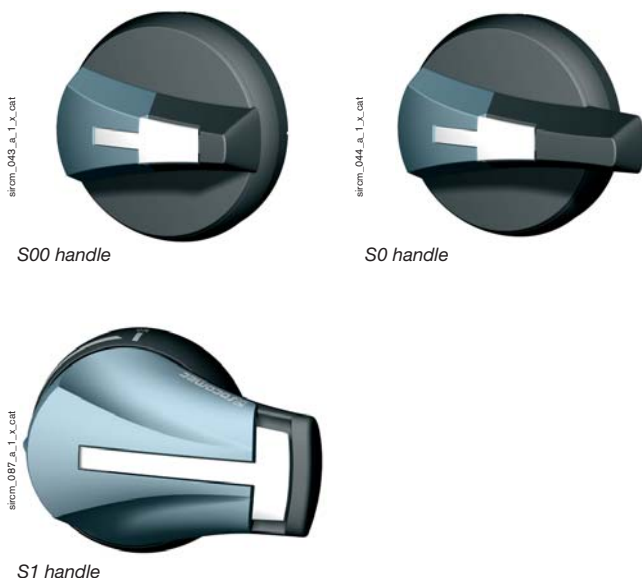
For SIRCO M and SIRCOVER M

| Rating (A)  | Handle colour | Handle   | References       |
|-------------|---------------|----------|------------------|
| 16 ... 80   | Blue          | M00-type | 2299 <b>5012</b> |
| 100 ... 125 | Blue          | M01-type | 2299 <b>5032</b> |

For SIRCO MV

| Rating (A)  | Handle colour | Handle  | Reference        |
|-------------|---------------|---------|------------------|
| 100 ... 160 | Blue          | M0-type | 2299 <b>5022</b> |

#### Door interlocked external handle



#### References

For SIRCO M - Front and right side operation I - 0

| Rating (A)  | Handle colour | Handle   | External IP | References                         |
|-------------|---------------|----------|-------------|------------------------------------|
| 16 ... 80   | Black         | S00-type | IP55        | 1471 <b>1111</b> <sup>(1)</sup>    |
| 16 ... 80   | Black         | S00-type | IP65        | 1473 <b>1111</b> <sup>(1)</sup>    |
| 16 ... 80   | Red/Yellow    | S00-type | IP65        | 1474 <b>1111</b> <sup>(1)</sup>    |
| 100 ... 125 | Black         | S0-type  | IP55        | 1481 <b>1111</b> <sup>(1)</sup>    |
| 100 ... 125 | Black         | S0-type  | IP65        | 1483 <b>1111</b> <sup>(1)</sup>    |
| 100 ... 125 | Red/Yellow    | S0-type  | IP65        | 1484 <b>1111</b> <sup>(1)</sup>    |
| 16 ... 125  | Black         | S1-type  | IP55        | 1411 <b>2111</b> <sup>(1)(2)</sup> |
| 16 ... 125  | Black         | S1-type  | IP65        | 1413 <b>2111</b> <sup>(1)(2)</sup> |
| 16 ... 125  | Red/Yellow    | S1-type  | IP65        | 1414 <b>2111</b> <sup>(1)(2)</sup> |

For SIRCO M - Left side operation I - 0

| Rating (A)  | Handle colour | Handle   | External IP | References                         |
|-------------|---------------|----------|-------------|------------------------------------|
| 16 ... 80   | Black         | S00-type | IP65        | 147A <b>5111</b>                   |
| 16 ... 80   | Red/Yellow    | S00-type | IP65        | 147B <b>5111</b>                   |
| 100 ... 125 | Black         | S0-type  | IP65        | 148A <b>5111</b>                   |
| 100 ... 125 | Red/Yellow    | S0-type  | IP65        | 148B <b>5111</b>                   |
| 16 ... 125  | Black         | S1-type  | IP65        | 141A <b>2111</b> <sup>(1)(2)</sup> |
| 16 ... 125  | Red/Yellow    | S1-type  | IP65        | 141B <b>2111</b> <sup>(1)(2)</sup> |

For SIRCOVER M changeover switches - Front operation I - 0 - II

| Rating (A) | Handle colour | Handle   | External IP | References                         |
|------------|---------------|----------|-------------|------------------------------------|
| 16 ... 80  | Black         | S00-type | IP65        | 1473 <b>1113</b>                   |
| 16 ... 80  | Black         | S1-type  | IP65        | 1413 <b>2113</b> <sup>(1)(2)</sup> |

For SIRCOVER M changeover switches - Front operation I - I+II - II

| Rating (A) | Handle colour | Handle   | External IP | References                         |
|------------|---------------|----------|-------------|------------------------------------|
| 16 ... 80  | Black         | S00-type | IP65        | 1473 <b>1114</b>                   |
| 16 ... 80  | Black         | S1-type  | IP65        | 1413 <b>2114</b> <sup>(1)(2)</sup> |

(1) Defeatable handle.

(2) Door interlocked when padlocked in off.



## Accessories

### Door interlocked external handle - SIRCO MV



S0 handle



S1 handle

#### References

##### S0 type handle - Front and right side operation I - 0

| Rating (A)  | Handle colour | External IP | References                      |
|-------------|---------------|-------------|---------------------------------|
| 100 ... 160 | Black         | IP55        | 1491 <b>0111</b> <sup>(1)</sup> |
| 100 ... 160 | Black         | IP65        | 1493 <b>0111</b> <sup>(1)</sup> |
| 100 ... 160 | Red/Yellow    | IP65        | 1494 <b>0111</b> <sup>(1)</sup> |

##### S0 type handle - Left side operation I - 0

| Rating (A)  | Handle colour | External IP | References       |
|-------------|---------------|-------------|------------------|
| 100 ... 160 | Black         | IP65        | 149A <b>9111</b> |
| 100 ... 160 | Red/Yellow    | IP65        | 149B <b>9111</b> |

##### S1 type handle - Front operation I - 0

| Rating (A)  | Handle colour | External IP | References                      |
|-------------|---------------|-------------|---------------------------------|
| 100 ... 160 | Black         | IP55        | 1411 <b>2111</b> <sup>(1)</sup> |
| 100 ... 160 | Black         | IP65        | 1413 <b>2111</b> <sup>(1)</sup> |
| 100 ... 160 | Red/Yellow    | IP65        | 1414 <b>2111</b> <sup>(1)</sup> |

##### S1 type handle - Right side operation I - 0

| Rating (A)  | Handle colour | External IP | References       |
|-------------|---------------|-------------|------------------|
| 100 ... 160 | Black         | IP55        | 1415 <b>2111</b> |
| 100 ... 160 | Black         | IP65        | 1417 <b>2111</b> |
| 100 ... 160 | Red/Yellow    | IP65        | 1418 <b>2111</b> |

##### S1 type handle - Left side operation I - 0

| Rating (A)  | Handle colour | External IP | References       |
|-------------|---------------|-------------|------------------|
| 100 ... 160 | Black         | IP65        | 141A <b>2111</b> |
| 100 ... 160 | Red/Yellow    | IP65        | 141B <b>2111</b> |

(1) Defeatable handle.

### Shaft extensions for external handle



#### Use

Standard lengths:

- 150 mm,
- 200 mm,
- 320 mm.

Other lengths: please consult us.

For 3/4 pole switches: shaft extensions for external front and side handle.

For 6/8 pole switches and **SIRCOVER M** changeover switches: shaft extensions for external front handle only.

#### References

##### For SIRCO M and SIRCOVER M

| Rating (A) | Handle   | Shaft length (mm) | References       |
|------------|----------|-------------------|------------------|
| 16 ... 125 | S00-type | 150               | 1407 <b>0515</b> |
| 16 ... 125 | S00-type | 200               | 1407 <b>0520</b> |
| 16 ... 125 | S00-type | 320               | 1407 <b>0532</b> |
| 16 ... 125 | S1-type  | 200               | 1404 <b>0520</b> |
| 16 ... 125 | S1-type  | 320               | 1404 <b>0532</b> |
| 16 ... 125 | S1-type  | 400               | 1404 <b>0540</b> |

##### For SIRCO MV

| Rating (A)  | Handle  | Shaft length (mm) | References       |
|-------------|---------|-------------------|------------------|
| 100 ... 160 | S0-type | 150               | 1409 <b>0615</b> |
| 100 ... 160 | S0-type | 200               | 1409 <b>0620</b> |
| 100 ... 160 | S0-type | 320               | 1409 <b>0632</b> |
| 100 ... 160 | S1-type | 200               | 1401 <b>0620</b> |
| 100 ... 160 | S1-type | 320               | 1401 <b>0632</b> |
| 100 ... 160 | S1-type | 400               | 1401 <b>0640</b> |

### Guide cone

#### Use

The guide cone makes it possible for S00 and S0 handles to accept a shaft with up to 10 mm of vertical play.

#### References

| Rating (A) | Handle          | Reference                       |
|------------|-----------------|---------------------------------|
| 16 ... 160 | S00 and S0-type | 1419 <b>0000</b> <sup>(1)</sup> |

(1) 10 units per pack.

# SIRCO M & MV

## 16 to 160 A

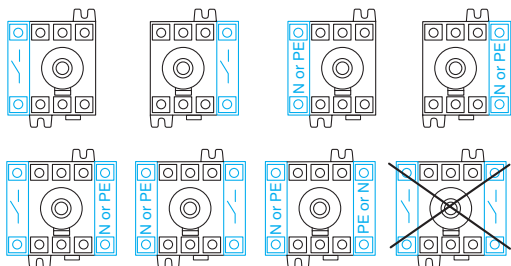


- Functions
- References
- Accessories**
- Characteristics
- Dimensions

## Accessories

### Additional poles configurations

#### SIRCO M



sircm\_078\_a\_1\_gp\_cat

### Switched fourth pole module



sircm\_072\_b\_1\_x\_cat

#### Use

Adds one or two poles and transforms:

- 3 pole **SIRCO M** load break switches into a 4 pole,
- 6 pole **SIRCO M** load break switches into a 8 pole,
- 3 pole **SIRCOVER M** changeover switches into a 4 pole.

#### References

For **SIRCO M** and **SIRCOVER M**

| Rating (A) | No. of pole | Type     | References       |
|------------|-------------|----------|------------------|
| 16         | 1 P         | switched | 2200 <b>1000</b> |
| 20         | 1 P         | switched | 2200 <b>1001</b> |
| 25         | 1 P         | switched | 2200 <b>1002</b> |
| 32         | 1 P         | switched | 2200 <b>1003</b> |
| 40         | 1 P         | switched | 2200 <b>1004</b> |
| 63         | 1 P         | switched | 2200 <b>1006</b> |
| 80         | 1 P         | switched | 2200 <b>1008</b> |
| 100        | 1 P         | switched | 2200 <b>1010</b> |
| 125        | 1 P         | switched | 2200 <b>1011</b> |

### Unswitched neutral pole



sircm\_073\_b\_1\_x\_cat

#### Use

Transforms the 3-pole switch into a 3-pole + solid neutral.

#### References

For **SIRCO M** and **SIRCOVER M**

| Rating (A)  | No. of pole | Type       | References       |
|-------------|-------------|------------|------------------|
| 16 ... 40   | 1 P         | unswitched | 2200 <b>5005</b> |
| 63 ... 80   | 1 P         | unswitched | 2200 <b>5009</b> |
| 100 ... 125 | 1 P         | unswitched | 2200 <b>5011</b> |

### Protective earth module



sircm\_074\_b\_1\_x\_cat

#### Use

Adds 1 protective earth pole to the switch-disconnector.

#### References

For **SIRCO M** and **SIRCOVER M**

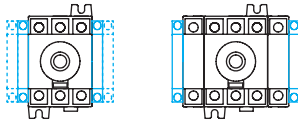
| Rating (A)  | No. of pole | Type       | References       |
|-------------|-------------|------------|------------------|
| 16 ... 40   | 1 P         | unswitched | 2200 <b>9005</b> |
| 63 ... 80   | 1 P         | unswitched | 2200 <b>9009</b> |
| 100 ... 125 | 1 P         | unswitched | 2200 <b>9011</b> |



## Accessories

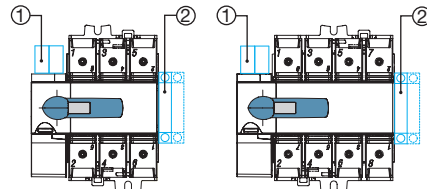
### Auxiliary contacts configurations

#### SIRCO M and SIRCOVER M



sircm\_081\_a\_1\_cat

#### SIRCO MV



sircm\_088\_a\_1\_cat

1. Max. 2 "U" type auxiliary contacts.
2. Max. 4 "M" type auxiliary contacts.

### M type auxiliary contacts



sircm\_075\_b

#### Use

Pre-break and signalisation of positions 0 and I by NO+NC or 2 NO auxiliary contacts.

They can be mounted on the left or on the right side of the device.

Max 4 auxiliary contacts (2 modules).

Pre-break is not guaranteed on the **SIRCO MV**.

#### Characteristics

NO+NC auxiliary contacts: IP2 with front operation.

#### References

For **SIRCO M** and **SIRCOVER M**

| Rating (A) | Type         | References       |
|------------|--------------|------------------|
| 16 ... 125 | 1 NO + NC AC | 2299 <b>0001</b> |
| 16 ... 125 | 2 NO AC      | 2299 <b>0011</b> |

For **SIRCO MV** <sup>(1)</sup>

| Rating (A)  | Type         | References       |
|-------------|--------------|------------------|
| 100 ... 160 | 1 NO + NC AC | 2299 <b>0001</b> |
| 100 ... 160 | 2 NO AC      | 2299 <b>0011</b> |

(1) Signalling contact only.

#### Characteristics

| Contact type | Nominal current (A) | Operating current I <sub>e</sub> (A)<br>230 VAC |       |
|--------------|---------------------|---|-------|
|              |                     | AC-13   | AC-15 |
| NO+NC        | 10                  | 10  | 6     |

### U type auxiliary contacts



sircm\_048\_a\_1\_x\_cat

#### Use

Pre-break and signalisation by NO or NC auxiliary contact can be mounted on the device.

Only switcheable for **SIRCO MV** switches.

Max 2 auxiliary contacts.

#### References

For **SIRCO MV**

| Rating (A)  | Type    | References       |
|-------------|---------|------------------|
| 100 ... 160 | 1 NO AC | 3999 <b>0701</b> |
| 100 ... 160 | 1 NC AC | 3999 <b>0702</b> |

# SIRCO M & MV

## 16 to 160 A



- Functions
- References
- Accessories**
- Characteristics
- Dimensions

## Accessories

### Terminal shrouds



#### Use

Top and bottom protection against direct contact with the terminals or connection parts:

- 1 or 3 pole for **SIRCO M** and **SIRCOVER M**,
- 3 or 4 pole for **SIRCO MV**.

1 piece required to fully shroud both incoming and outgoing terminals.

#### Advantage

Perforations allowing thermographic inspection without removing.

#### References

For **SIRCO M** and **SIRCOVER M**

| Rating (A)  | No. of pole | Position       | References       |
|-------------|-------------|----------------|------------------|
| 16 ... 40   | 1 P         | top and bottom | 2294 <b>1005</b> |
| 16 ... 40   | 3 P         | top and bottom | 2294 <b>3005</b> |
| 63 ... 80   | 1 P         | top and bottom | 2294 <b>1009</b> |
| 63 ... 80   | 3 P         | top and bottom | 2294 <b>3009</b> |
| 100 ... 125 | 1 P         | top and bottom | 2294 <b>1011</b> |
| 100 ... 125 | 3 P         | top and bottom | 2294 <b>3016</b> |

For **SIRCO MV**

| Rating (A)  | No. of pole | Position       | References       |
|-------------|-------------|----------------|------------------|
| 100 ... 160 | 3 P         | top and bottom | 2294 <b>3016</b> |
| 100 ... 160 | 4 P         | top and bottom | 2294 <b>4016</b> |

### Conversion kit



Conversion kit for 6 or 8 pole **SIRCO M** load break switches

#### Use

This accessory enables the assembly of two 3 pole switches + additional poles in order to achieve:

- 6 or 8 pole **SIRCO M** load break switches,
- 3 or 4 pole **SIRCOVER M** changeover switches.

**SIRCOVER M** changeover switches ensure switching, transfer of sources (I - 0 - II) or transfer of two low voltage circuits on load (I - I+II - II), with the continuity of power supply.

For direct operation, the handle is included but not the shaft.

For external operation, add the handle + the shaft.

#### References

For **SIRCO M**

| Rating (A) | Type                         | Reference        |
|------------|------------------------------|------------------|
| 16 ... 80  | 6/8-pole load break switches | 2269 <b>6009</b> |

For **SIRCOVER M**

| Rating (A) | Type                                | References       |
|------------|-------------------------------------|------------------|
| 16 ... 80  | changeover switches (I - 0 - II)    | 2209 <b>6009</b> |
| 16 ... 80  | changeover switches (I - I+II - II) | 2299 <b>6009</b> |



Conversion kit for 3 or 4 pole **SIRCOVER M** changeover switches (I - 0 - II) or (I - I+II - II)

### Voltage sensing and power supply tap



#### Use

Allows up to 2 x <math>\leq 1.5 \text{ mm}^2</math> voltage sensing or power cables connection. Only suitable for **SIRCO MV** switches.

#### Reference

For **SIRCO MV**

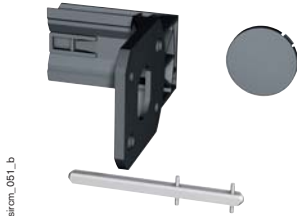
| Rating (A)  | No. of parts | Reference                       |
|-------------|--------------|---------------------------------|
| 100 ... 160 | Pair         | 1399 <b>4006</b> <sup>(1)</sup> |

(1) 2 parts per reference.



## Accessories

### Door / Panel mounting kit



sircm\_061\_b

#### Use

This kit enables direct mounting of the switch on the door panel, on the right or left side of the panel.

Moreover, the connection clamps of the switch are always accessible.

The external handle is quick and easy to install due to an internal locking nut mounted on the inside of the enclosure.

2 kits are available:

- one for complete protection IP2X,
- one with overall dimensions reduced.

#### Reference

For **SIRCO M**

| Rating (A) | No. of pole | Description                | References                      |
|------------|-------------|----------------------------|---------------------------------|
| 16 ... 80  | 3/4 P       | Complete protection IP2X   | 2299 <b>3309</b> <sup>(1)</sup> |
| 16 ... 80  | 3/4 P       | Overall dimensions reduced | 2299 <b>3409</b> <sup>(1)</sup> |

(1) Delivered with shaft.

### Cap for side operation mounting



sircm\_126\_a\_1\_cat

#### Use

Accessory for capping the front face of the **SIRCO M** when utilising in side operation. 20 units per pack.

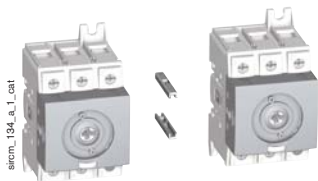
This piece can be snapped on the switch body directly.

#### Reference

For **SIRCO M**

| Rating (A) | Pack qty | Reference        |
|------------|----------|------------------|
| 16 ... 80  | 20       | 2299 <b>9409</b> |

### 6/8 pole joining accessory



sircm\_134\_a\_1\_cat

#### Use

40 units per pack, they allow the joining of two 3 pole switches (+ additional pole) in order to form a 6 or 8 pole switch for external side operation.

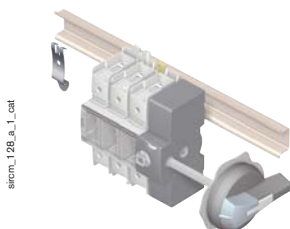
For multi-poles switches, please consult us.

#### Reference

For **SIRCO M**

| Rating (A) | Pack qty | Reference        |
|------------|----------|------------------|
| 16 ... 80  | 40       | 2299 <b>9909</b> |

### DIN rail locking clip



sircm\_128\_a\_1\_cat

#### Use

This locking clip prevents the **SIRCO MV** from sliding when DIN rail mounted. For use in external side operation.

#### Reference

For **SIRCO MV**

| Rating (A)  | Type | References       |
|-------------|------|------------------|
| 100 ... 160 | M4   | 5000 <b>0041</b> |
| 100 ... 160 | M5   | 5000 <b>0051</b> |