

Rittal – The System.

Faster – better – everywhere.

► **Base/plinth corner
piece with base/plinth
trim panels, front and
rear, 200 mm for VX,
TS, TS IT, SE, CM, TP,
PC, IW, TE – VX
8620.024**

Date : Dec 12, 2019

ENCLOSURES

POWER DISTRIBUTION

CLIMATE CONTROL

IT INFRASTRUCTURE

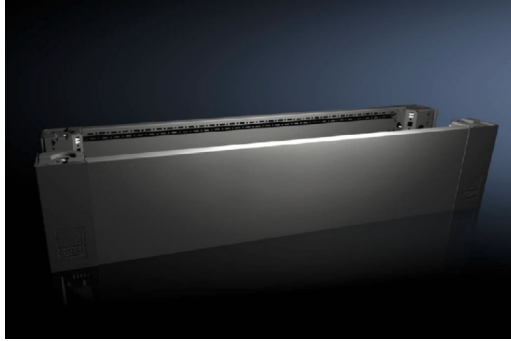
SOFTWARE & SERVICES

FRIEDHELM LOH GROUP



Base/plinth corner piece with base/plinth trim panels, front and rear, 200 mm for VX, TS, TS IT, SE, CM, TP, PC, IW, TE – VX 8620.024

created: 12.12.2019 on www.rittal.com/com-en



Product description

Description: High-load capacity base/plinth corner pieces with moulded self-positioning to the baying enclosure system, may be used with or without trim panels depending on the application. Large openings in the corner piece for optimum access to the screw-fastening point, may be concealed with a corner and baying cover.

Material: Base/plinth corner piece: Sheet steel
Base/plinth trim panel front/rear: Sheet steel
Corner and baying cover: Plastic

Colour: RAL 9005

Supply includes: 4 base/plinth corner pieces, 200 mm high
4 corner covers
1 baying cover
1 base/plinth trim panel, front/rear, 200 mm high
2 base/plinth trim panels, front/rear, 100 mm high
Assembly parts

Note: Base/plinth trim panels, sides to finish off a unit, for additional stabilisation between base/plinths, or for interior configuration

Product features

To fit: Enclosure type: VX
Width: = 1000 mm

Dimensions: Height: 200 mm

| | |
|--------------------------------------|--|
| Packs of: | 2 pc(s). |
| Weight/pack: | 9.98 kg |
| Copper weight (kg per piece): | 0 |
| EAN: | 4028177922136 |
| Customs tariff number: | 94039010 |
| ETIM 7.0: | EC000721 |
| ETIM 6.0: | EC000721 |
| eCl@ss 8.0/8.1: | 27182003 |
| eCl@ss 6.0/6.1: | 27182003 |
| Product description: | VX Base/plinth corner piece, with base/plinth trim panel, front and rear, H: 200 mm, for W: 1000 mm, sheet steel |
| Approvals | |
| Approvals: | UL + C-UL |
| Certificates: | EAC |